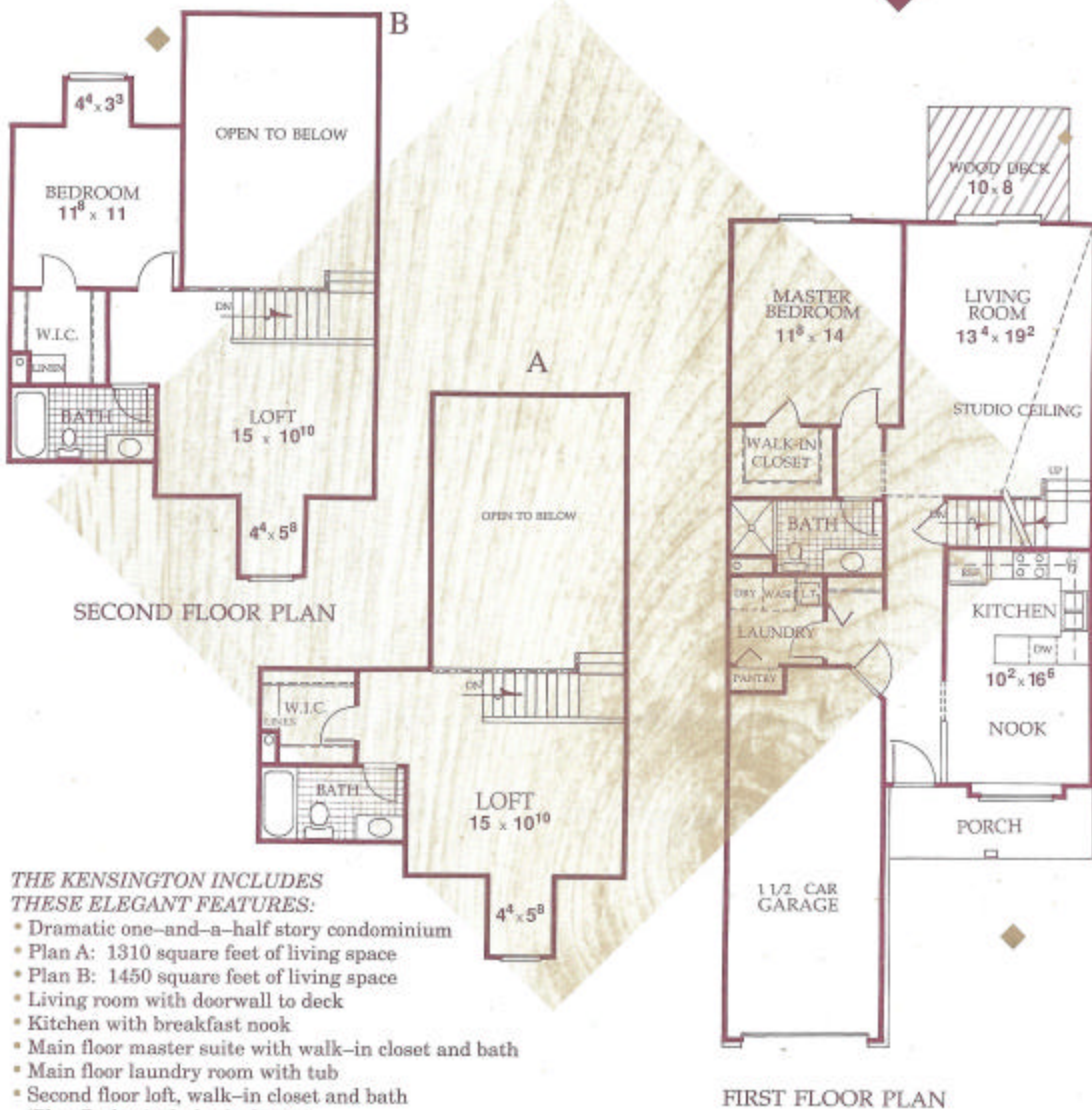


THE KENSINGTON

WOODFIELD SQUARE



THE KENSINGTON INCLUDES THESE ELEGANT FEATURES:

- Dramatic one-and-a-half story condominium
- Plan A: 1310 square feet of living space
- Plan B: 1450 square feet of living space
- Living room with doorwall to deck
- Kitchen with breakfast nook
- Main floor master suite with walk-in closet and bath
- Main floor laundry room with tub
- Second floor loft, walk-in closet and bath (Plan B also includes bedroom)
- Full basement
- Attached 1 1/2 car garage

Prices, plans and specifications are subject to change or modification without notice at the sole discretion of the builder. Sizes shown are approximate. Dimensions may vary. Above plan not for construction use. Designed by Adler Building & Development Co. © 1995